

Cephalobaris eskelundi

gen. et spec. nov.

(Hymenopt. Ichneum.)

By

J. P. Kryger, Gentofte.

Fem:

Head: flat, oblong, quadratic, smooth, almost double as long as broad, not constricted behind. Sides parallel, posterior margin sinuate, ocelli forming an acute triangle, the foremost immediately behind the centre of head.

Antennæ: 19 joints; the three first joints of funiculus the longest, joints 8 to 18 almost of equal length, half the length of first joint of funiculus, joint 19 a little longer than the preceding. Funiculus increasing slightly in thickness towards apex. All the joints thickly covered with short fine hairs. The entire antennæ about as long as from apex of abdomen to centre of thorax. Ring-joint very little.

Thorax: Slightly more than twice as long as the head, broader than the head, half as broad as long. Metathorax transversely wrinkled anteriorly, deeply punctulated posteriorly, with 4 longitudinally raised lines, the two outer about $\frac{1}{3}$ the length of metathorax, the two middle quite short.

Wings: uncoloured, stigma broad triangular. The radial cell short. 1st nervus recurrens terminating in the first cubital cell. Second cubital cell pentagonal, open. Cubital vein of hind wings distinct to the base.

Legs: All tibiæ with one spur, claws simple, legs long and slender, posterior femora reach as far back as 1st

segment of abdomen. All legs closely covered with short hairs.

Abdomen: Slightly longer than head and thorax, not broader than thorax, elongated, oval. 1st segment slightly bent, gradually extended, apex hardly double as broad as base. 2nd segment the longest. First segment granulated at base, longitudinally wrinkled anteriorly, these wrinkles continued slightly over on 2nd segment. The

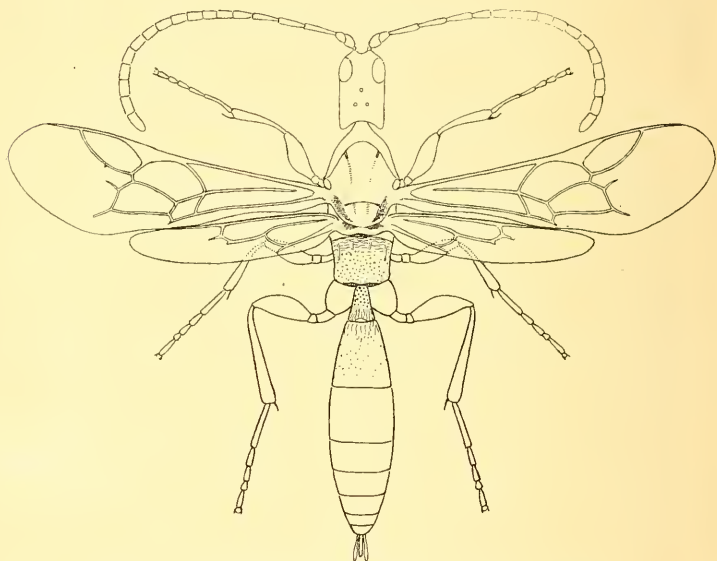


Fig. 1. *Cephalobaris eskelundi* n. gen. n. sp. Fem.

other part of 2nd segment, with exception of the extreme anterior margin, granulated. Last segments smooth, whole abdomen with scanty light hair.

Ovipositor: short, about $\frac{1}{1.5}$ the length of abdomen, outer sheaths spoonshaped, dilated towards apex, with short light marginal hairs.

Colour: Head and prothorax shining black, metathorax and the two first abdominal segments black; rest of abdomen pitchy-brown, slightly lighter at the base of

the second segment and at apex, ovipositor light pitchy-brown. Underside of abdomen light pitchy-brown. Length 3 mm.

Patria: Denmark.

14—6—1913 two specimens and 21—6—1913 two specimens all ♀♀, and all taken on dried up banks of the lake *Damhussøen* amongst flood rubbish. W. Schlick, many years ago, bred some specimens from flood rubbish from the fen *Utterslev Mose*, but he was unsuccessful in discovering the host.

Named in honor of my friend K. Eskelund.

Type in Zool. Museum, Copenhagen.

It is not my intention to express any opinion as to the position of this interesting species in the system, as my knowledge of the Ichneumonidæ is insufficient. Dr. A. Roman, who has examined a specimen of this species, is of the opinion that it must form a special genus near *Eusterinx* Först., *Microleptes* Gr. and *Hemiphanes* Först.
